

SOLD

VILLA BISMARCK

Private villa with a pool

Overview



Location
AWAS
Alibaug

Accessibility
12 min
drive, from
Mandwa Jetty

Bedrooms
5
with en-suite
washrooms

Washrooms
6
including one
poolside shower

Built Up Area
9,000
Square Feet

Plot Size
88,000
Square Feet

About Villa Bismarck

This 9000 square foot, five-bedroom villa is nestled in the midst of two acres of manicured gardens. Like all Palmore homes, Villa Bismarck enjoys heavily landscaped grounds. Surrounded by an attractive assortment of lily, bougainvillea and sonchampa plants, its entrance opens to a beautiful courtyard with a spathodea plant at the center. Sandwiched between well-maintained shrubberies, and dotted with lily and ficus plants, the walkway leading up to the villa is a visual treat.

The villa is designed as three units looking into a large swimming pool. Like all Palmore homes, each unit is fitted with central air conditioning, speakers, and Wi-Fi accessibility. From the entrance, one first approaches Block A, a spacious cabana with fitted floor-to-ceiling glass doors. The L-shaped design plan of Block A perfectly integrates the living and dining areas.

Block B has two bedrooms with en-suite bathrooms. The bedrooms open out directly to the swimming pool. On the ground floor,

the entrance leads to a cozy seating area, and an indoor area for recreation with a pool table, perfect for weekend entertaining. The balcony is designed as a comforting space to unwind in the evenings, offering a great vantage point to gaze out at the swimming pool, trees and distant Kankeshwar mountain range.

Block C has three bedrooms all facing the pool and the mountains beyond. A cozy library space is provided between the bedrooms overlooking the pool.

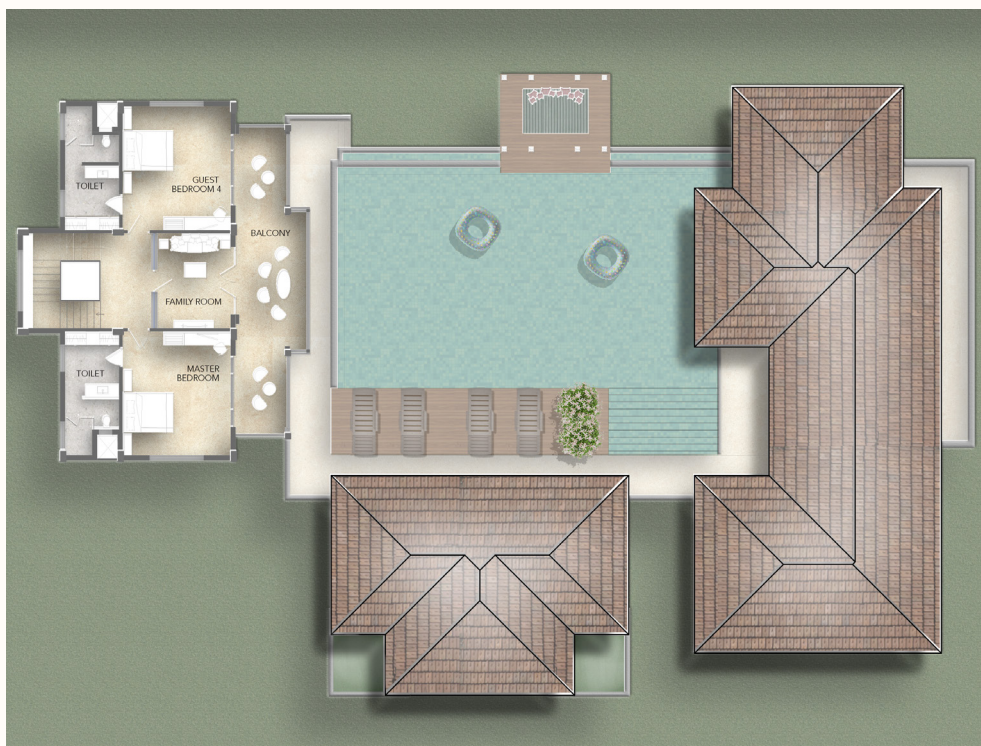
The focal attraction of the property is the 2,000 square foot swimming pool. Facing the deck on the other side of the pool is a charming pergola to take a nap, enjoy an evening with friends by the pool or a drink in solitude.

FLOOR PLANS



Ground Floor

- Entrance
- Living Room/Cabana
- Dining
- Pool
- Pool Deck 1
- Pool Deck 2
- Kitchen
- Toilet
- Pump Room
- Outdoor Bar
- Guest Bedroom 1 + Toilet
- Guest Bedroom 2 + Toilet
- Guest Bedroom 3 + Toilet
- TV Room + Toilet



First Floor

- Guest Bedroom 4
- Guest Bedroom 4 Toilet
- Master Bedroom
- Master Toilet
- Family Room
- Balcony

FEATURES



Lifestyle

Built as a family villa with an emphasis on the swimming pool, outdoor gazebo and outdoor bar area.



Views

Full 180 degree unimpeded views of the Kankeshwar mountain range.



Rooms

1 master bedroom, 4 guest bedrooms, 2 terraces, library and a skylight in living area.



Facilities

3 covered parking spots, outdoor gazebo, oversize Bismarck palms planted at the entrance, outdoor bar, heated pool, yoga deck and barbeque area.



Staff Quarters

A separate staff quarters with two rooms and washroom as a separate unit to the main villa.



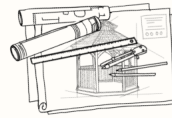
Pool

A large pool measuring 40 feet by 50 feet.



Kitchen

Fitted with air conditioning, all cabinetry and washers with separate staff entrance accessible from staff quarters.



Finising

Modern contemporary finishing.



Vaastu Shaastra

Compliant with the principles of Vaastu Shaastra.

Every Palmore villa is equipped with amenities as below:

- Wi-Fi
- Gardener
- Full furnishing
- Private storage
- Fire extinguishers
- Air conditioning units
- Concierge service accessible to all our home buyers
- Staff quarters with separate bedrooms and washrooms
- Cabling and wiring for all electronic equipment in place
- AMC looking after entire villa and all utilities and facilities
- Highest quality interior finishes
- Individual septic tank for each home
- Ample open landscaped green spaces
- Dedicated parking facilities on each plot
- Full-time dedicated and trained caretaker
- Managed organic vegetable and fruit garden
- Large size swimming pool with built pump room
- Onsite bore-well ensuring steady water of supply with rain water harvesting techniques used
- Dedicated power transformers supplying electricity to each home



Quick Information

+91 82917 39898 info@palmore.in